



Traffic Safety Basic Facts 2008

Children (Aged <16)

In this Basic Fact Sheet, 'children' are defined as those who are aged below 16 years. (The age at which people are allowed to drive a motor vehicle varies across the EU, but 14 and 15 year olds appear, on the whole, to fit into this group rather than with 'young people'.) Children tend to be thought of as innocent victims of road accidents more often than is the case for adults.

The number of children killed in road traffic accidents fell from 1.739 in 1997 to 918 in 2006¹, a fall of 47%. Table 1 presents the number of children killed in each of the EU-19² countries for each year for which the data are available over the last ten years, with the totals presented in Figure 1. Because the data for the new countries are only available for the year 2005 or 2006, they are not considered in EU total trends.

Table 1: Fatalities aged <16 per country, 1997-2006¹

	1997	1998	1999	2000	2001	2002	2003	2004	2005	2006
BE	61	99	72	67	71	45	37	35	39	35
CZ	-	-	-	-	-	-	-	-	-	36
DK	28	22	43	31	29	16	25	22	15	17
EE	-	-	-	-	-	-	-	-	13	7
EL	84	74	66	54	56	51	59	62	49	47
ES	223	260	258	228	208	189	189	162	149	144
FR	493	455	421	414	347	288	244	209	168	153
IE	34	40	26	24	33	23	17	-	-	-
IT	217	189	193	165	199	228	173	159	-	-
LU	3	2	2	3	6	3	-	-	-	-
HU	-	-	-	-	-	-	37	43	43	48
MT	-	-	-	-	-	-	-	-	3	0
NL	79	56	82	66	61	55	71	-	-	-
AT	43	48	51	35	34	33	45	30	35	30
PL	-	-	-	-	-	-	-	-	198	-
PT	139	152	96	89	65	72	63	55	39	24
FI	36	24	33	23	24	20	24	15	26	10
SE	32	33	44	24	25	27	28	24	19	24
UK	268	224	239	204	229	192	186	177	156	184
EU-14¹	1.739	1.677	1.625	1.427	1.387	1.241	1.164	1.041	945	918
Yearly¹ Change	-	-3,6%	-3,1%	-12,2%	-2,8%	-10,5%	-6,2%	-10,6%	-9,2%	-2,8%

EU-14 totals can differ due to rounding because of the use of coefficients in order to arrive to fatalities at 30 days

Source: CARE Database / EC
Date of query: July 2008

¹ Using latest available data i.e. 2006 for all countries except LU (2002), IE and NL (2003), IT (2004), PL (2005) and UK (2006 for GB, 2005 for NI). The data from CZ, EE, HU, MT and PL are not considered.

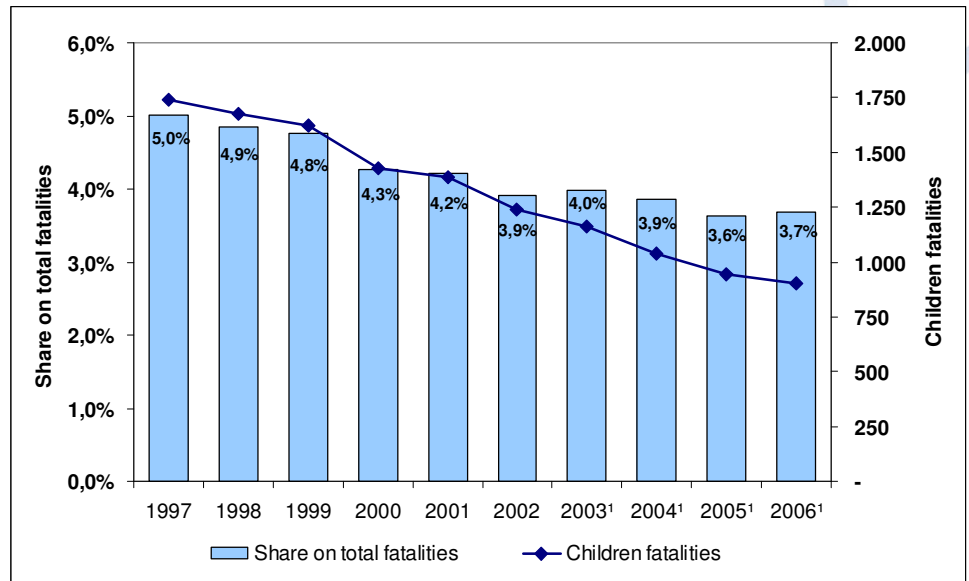
² See table "Definition of EU-level and used Country abbreviations" on page 12

About 1.200 children died in road traffic accidents in 2006¹ (EU-14 plus Czech Republic, Estonia, Hungary, Malta and Poland)





Figure 1: Number of child fatalities and their proportion on total fatalities in EU-14, 1997-2006¹



Source: CARE Database / EC
Date of query: July 2008

The number of child fatalities in the EU-14 countries has decreased over the last decade. There was also a decrease in child fatalities share of the total numbers of fatalities over the last decade. In 2006 the share of child fatalities on all fatalities is 3,7%.

The annual number of children killed in road traffic accidents fell by almost a half between 1997 and 2006¹ in the EU-14 countries.





Table 2: Child fatality proportions (fatalities per 1 mil. inhabitants) per country, 2006

	fatality rate children	fatality rate all	relative rate
BE	19	101	0,19
CZ	24	104	0,23
DK	17	56	0,30
EE	35	152	0,23
EL	29	149	0,20
ES	22	93	0,24
FR	13	75	0,17
IE***	20	79	0,25
IT**	19	95	0,20
LU****	35	131	0,26
HU	31	129	0,24
MT	0	27	-
NL***	24	63	0,38
AT	23	88	0,26
PL*	32	143	0,23
PT	15	92	0,16
FI	11	64	0,17
SE	15	49	0,31
UK*	16	52	0,30
EU-19	20	88	0,22

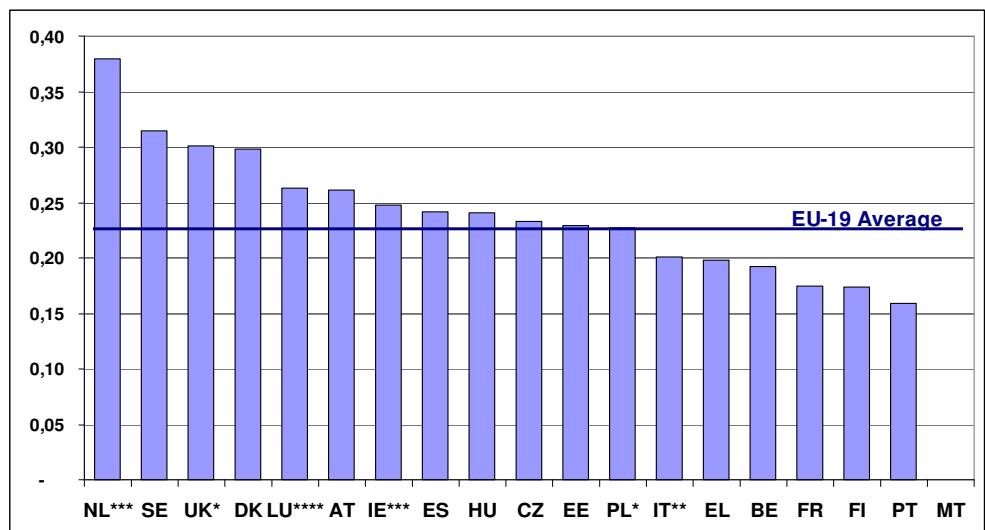
* Data from 2005 (UK = GB 2006 + NI 2005)
** Data from 2004
*** Data from 2003
**** Data from 2002

Source: CARE Database / EC
Date of query: July 2008
Source of population data: EUROSTAT

Children are, on average, at less than a quarter of the risk of dying in a road traffic accident than the average person.

Fewer than one in twenty fatalities in road traffic accidents is a child, although children make up almost one in five of the population. They are at less than a quarter of the risk of the average member of the population across the EU-19 as a whole. This varies from less than a fifth in Belgium, France, Portugal and Finland to more than one third in The Netherlands, as shown in Figure 2.

Figure 2: Relative rates for fatality proportions in children, 2006



* Data from 2005 (UK = GB 2006 + NI 2005)
** Data from 2004
*** Data from 2003
**** Data from 2002

Source: CARE Database / EC
Date of query: July 2008
Source of population data: EUROSTAT





The proportion of fatalities that were children fell from 5% in 1997 to 3,7% in 2006¹.

The number of child fatalities has reduced gradually as a proportion of all fatalities over the last ten years. Table 3 shows the proportion of child fatalities in each country and the EU-14 trend over this period.

Table 3: Fatalities aged <16 as a percentage of all fatalities per country, 1997-2006¹

	1997	1998	1999	2000	2001	2002	2003	2004	2005	2006
BE	4,5	6,6	5,2	4,6	4,8	3,4	3,1	3,0	3,6	3,3
CZ	-	-	-	-	-	-	-	-	-	3,4
DK	5,7	4,4	8,4	6,2	6,7	3,5	5,8	6,0	4,5	5,6
EE	-	-	-	-	-	-	-	-	7,7	3,4
EL	4,0	3,4	3,1	2,7	3,0	3,1	3,7	3,7	3,0	2,8
ES	4,0	4,4	4,5	3,9	3,8	3,5	3,5	3,4	3,4	3,5
FR	5,8	5,1	5,0	5,1	4,2	3,8	4,0	3,8	3,2	3,2
IE	7,2	8,7	6,3	5,7	8,0	6,1	5,0	-	-	-
IT	3,2	3,0	2,9	2,5	3,0	3,4	2,9	2,8	-	-
LU	5,0	3,5	3,4	3,9	8,6	4,8	-	-	-	-
HU	-	-	-	-	-	-	2,8	3,3	3,4	3,7
MT	-	-	-	-	-	-	-	-	17,6	-
NL	6,8	5,3	7,5	6,1	6,1	5,6	6,9	-	-	-
AT	3,9	5,0	4,7	3,6	3,5	3,5	4,8	3,4	4,6	4,1
PL	-	-	-	-	-	-	-	-	3,6	-
PT	5,5	7,1	4,8	4,8	3,9	4,3	4,1	4,2	3,1	2,5
FI	8,2	6,0	7,7	5,8	5,5	4,8	6,3	4,0	6,9	3,0
SE	5,9	6,2	7,6	4,1	4,3	4,8	5,3	5,0	4,3	5,4
UK	7,2	6,3	6,7	5,7	6,4	5,4	5,1	5,3	4,7	5,6
EU-14 ¹	5,0	4,9	4,8	4,3	4,2	3,9	4,0	3,9	3,6	3,7
Yearly ¹ Change		-3,0%	-2,0%	-10,5%	-1,0%	-7,3%	1,8%	-2,9%	-6,3%	2,6%

Source: CARE Database / EC
Date of query: July 2008

Age and Gender

Table 4 provides details of the age and gender of child fatalities, whilst Figure 3 presents the proportions of child fatalities in each country by gender. Whilst girls account for approximately two-fifths of fatalities for less than ten years old children, the proportion is lower among older children, being less than a third for fifteen year olds.

For girls as well as boys, more children aged 10-14 are killed than in either the under five or the 5-9 age groups, with the risk even higher for 15 year olds.

Boys account for nearly two-thirds (65%) of road traffic accident fatalities amongst children.





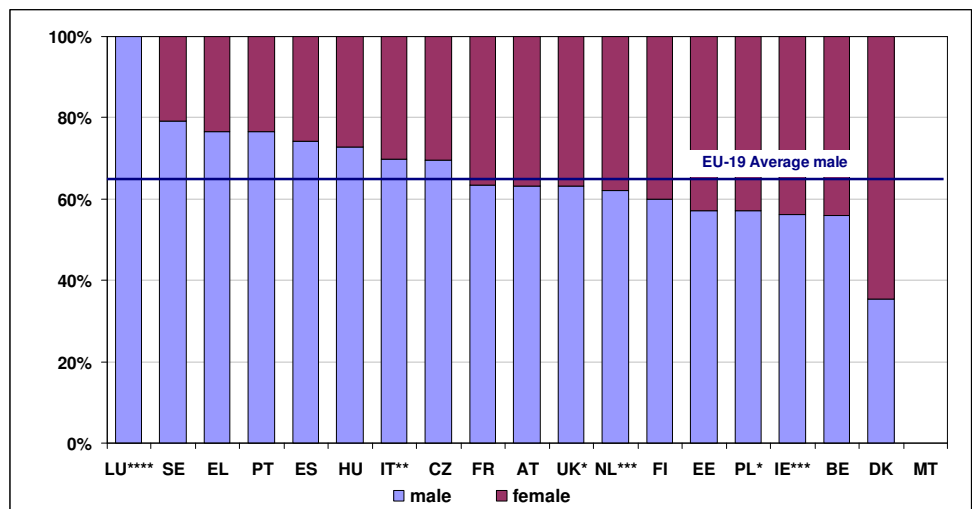
Table 4: Fatalities by gender, age and country, 2006

	Female					Male					Total
	<5	5-9	10-14	15	All ages	<5	5-9	10-14	15	All ages	
BE	4	6	3	2	248	3	5	10	1	818	1.069
CZ	2	3	4	2	225	1	6	16	2	838	1.063
DK	3	3	3	2	87	2	0	2	2	219	306
EE	0	2	1	0	50	0	0	3	1	152	204
EL	5	1	4	1	290	10	7	9	10	1.361	1.657
ES	8	8	18	3	892	26	22	33	25	3.197	4.104
FR	15	9	23	9	1.155	24	14	35	24	3.554	4.709
IE***	3	2	2	0	79	4	3	2	0	246	337
IT**	10	15	14	9	1.133	14	13	47	37	4.492	5.625
LU****	0	0	0	0	12	2	0	1	0	50	62
HU	3	2	6	2	293	5	6	20	4	1.008	1.303
MT	0	0	0	0	0	0	0	0	0	11	11
NL***	2	7	15	3	262	11	13	16	4	758	1.028
AT	3	1	5	2	190	6	1	7	5	540	730
PL*	11	29	35	10	1.243	19	28	45	21	4.175	5.444
PT	1	0	3	1	182	6	6	6	1	779	969
FI	0	2	1	1	95	0	0	2	4	241	336
SE	2	0	0	3	112	3	7	4	5	333	445
UK*	14	12	27	15	802	18	24	56	18	2.505	3.307
EU-19	86	102	164	65	7.350	154	155	314	164	25.277	32.709
% by gender	36%	40%	34%	28%	23%	64%	60%	66%	72%	77%	

* Data from 2005 (UK = GB 2006 + NI 2005) ** Data from 2004 *** Data from 2003 **** Data from 2002 Source: CARE Database / EC Date of query: July 2008

Both for boys and girls, more are killed in the 10-14 age group than in either the under five or the 5-9 age groups.

Figure 3: Distribution of fatalities amongst children by gender, 2006



* Data from 2005 (UK = GB 2006 + NI 2005) ** Data from 2004 *** Data from 2003 **** Data from 2002 Source: CARE Database / EC Date of query: July 2008

Boys account for approximately two-thirds of road traffic accident fatalities amongst children.





Mode of Transport

Table 5 shows the distribution of child fatalities by mode of transport. More than two fifths of child fatalities are car or taxi occupants, and pedestrians account for more than a quarter of fatalities. Denmark has the highest proportion of child pedestrian fatalities (over 50%). Mopeds and pedal cycles together accounts for one quarter of child fatalities, with the proportions highest in Finland (for Mopeds) and the Netherlands (for Pedal cycles) respectively.

Table 5: Child fatalities by mode of transport, 2006

	Pedestrians	Pedal cycle	Moped	Motor cycle	Car or taxi	Lorry, under 3.5 tonnes	Heavy goods vehicle	Bus or coach	Agricultural tractor	Other
BE	19%	26%	3%	6%	45%	0%	0%	0%	0%	0%
CZ	33%	17%	0%	3%	44%	0%	0%	3%	0%	0%
DK	53%	24%	6%	0%	12%	0%	0%	0%	0%	6%
EE	29%	14%	0%	0%	57%	0%	0%	0%	0%	0%
EL	26%	6%	4%	21%	36%	0%	2%	0%	4%	0%
ES	19%	4%	22%	1%	49%	1%	1%	3%	0%	1%
FR	16%	11%	16%	3%	48%	2%	0%	1%	1%	2%
IE***	47%	18%	0%	0%	35%	0%	0%	0%	0%	0%
IT**	15%	8%	26%	8%	42%	1%	0%	1%	0%	0%
LU****	33%	0%	0%	0%	67%	0%	0%	0%	0%	0%
HU	17%	21%	2%	0%	56%	2%	0%	0%	0%	2%
MT	0%	0%	0%	0%	0%	0%	0%	0%	0%	0%
NL***	24%	35%	4%	0%	28%	4%	0%	0%	4%	0%
AT	27%	0%	13%	0%	53%	0%	0%	0%	3%	3%
PL*	39%	14%	3%	3%	35%	0%	2%	3%	2%	0%
PT	33%	10%	10%	0%	43%	5%	0%	0%	0%	0%
FI	10%	20%	40%	0%	30%	0%	0%	0%	0%	0%
SE	33%	8%	17%	0%	38%	0%	0%	0%	4%	0%
UK*	42%	18%	2%	2%	35%	1%	0%	0%	0%	1%
EU-19	28%	14%	11%	3%	41%	1%	0%	1%	1%	1%

* Data from 2005 (UK = GB 2006 + NI 2005)
** Data from 2004

*** Data from 2003
**** Data from 2002

Source: CARE Database / EC
Date of query: July 2008

Table 6 and Figure 4 show that almost half of child fatalities are passengers, whilst more than a quarter are pedestrians. One in four child fatalities is a 'driver', though this includes those in charge of a pedal cycle, for example.

More than two fifths of children who died were travelling by car or taxi, whilst just over a quarter were pedestrians.





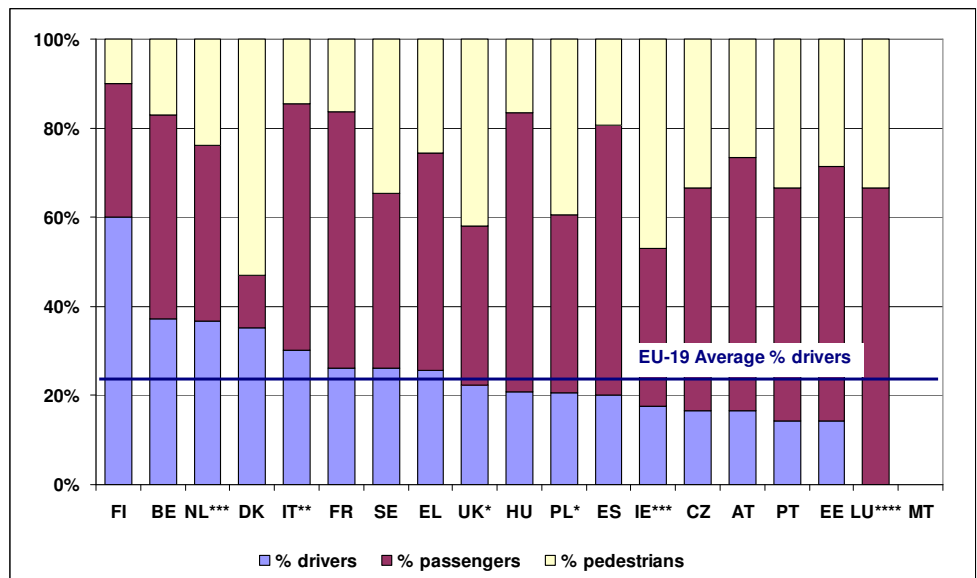
A quarter of child fatalities are 'drivers'.

Table 6: Distribution of driver, passenger and pedestrian child fatalities, 2006

	% drivers	% passengers	% pedestrians
BE	37%	46%	17%
CZ	17%	50%	33%
DK	35%	12%	53%
EE	14%	57%	29%
EL	26%	49%	26%
ES	20%	60%	19%
FR	26%	58%	16%
IE***	18%	35%	47%
IT**	30%	55%	14%
LU****	0%	67%	33%
HU	21%	63%	17%
MT	0%	0%	0%
NL***	37%	39%	24%
AT	17%	57%	27%
PL*	21%	40%	39%
PT	14%	52%	33%
FI	60%	30%	10%
SE	26%	39%	35%
UK*	22%	36%	42%
EU-19	25%	48%	27%

* Data from 2005 (UK = GB 2006 + NI 2005) ** Data from 2004 *** Data from 2003 **** Data from 2002 Source: CARE Database / EC Date of query: July 2008

Figure 4: Distribution of driver, passenger and pedestrian child fatalities, 2006



* Data from 2005 (UK = GB 2006 + NI 2005) ** Data from 2004 *** Data from 2003 **** Data from 2002 Source: CARE Database / EC Date of query: July 2008

Type of Road

The CARE data show whether each accident occurs on a motorway or not, and, if not, whether it occurs in an urban or a rural area. Table 7 shows the distribution of child fatalities in each country, with the data displayed in Figure 5. Fewer than one in ten child fatalities is killed on a motorway, nearly half not on a motorway and in a rural





area. Czech Republic, Luxembourg and Portugal are the only countries with more than half of child fatalities in an urban area, not on a motorway. (Note that the road type data are incomplete for Belgium, UK and Greece.)

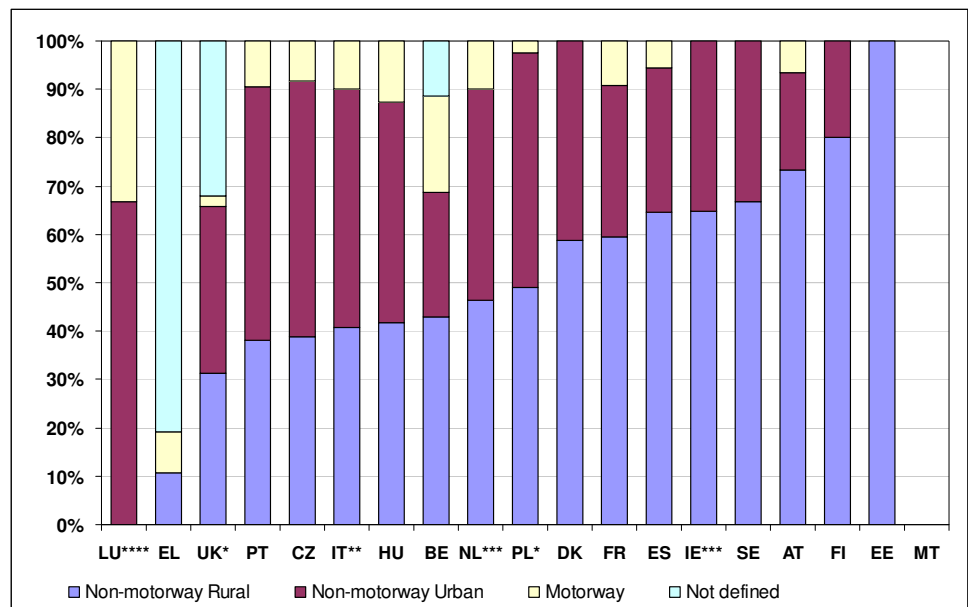
Table 7: Distribution of child fatalities by road type, 2006

	Motorway	Non-motorway		Not defined
		Rural	Urban	
BE	20%	43%	26%	11%
CZ	8%	39%	53%	0%
DK	0%	59%	41%	0%
EE	0%	100%	0%	0%
EL	8%	11%	0%	81%
ES	6%	65%	30%	0%
FR	9%	59%	31%	0%
IE***	0%	65%	35%	0%
IT**	10%	41%	49%	0%
LU****	33%	0%	67%	0%
HU	13%	42%	46%	0%
MT	0%	0%	0%	0%
NL***	10%	46%	44%	0%
AT	7%	73%	20%	0%
PL*	3%	49%	48%	0%
PT	10%	38%	52%	0%
FI	0%	80%	20%	0%
SE	0%	67%	33%	0%
UK*	2%	32%	34%	32%
EU-19	7%	48%	38%	8%

* Data from 2005 (UK = GB 2006 + NI 2005) ** Data from 2004 *** Data from 2003 **** Data from 2002 Source: CARE Database / EC Date of query: July 2008

Fewer than one in ten child fatalities occur on a motorway.

Figure 5: Distribution of child fatalities by road type, 2006



* Data from 2005 (UK = GB 2006 + NI 2005) ** Data from 2004 *** Data from 2003 **** Data from 2002 Source: CARE Database / EC Date of query: July 2008





Time of Day

In order to examine the distribution of child fatalities by time of day, the day has been divided into six four-hour periods beginning at midnight. Table 8 and Figure 6 show that one third of fatalities occur between 4pm and 8pm, with over a quarter occurring between noon and 4pm and 17% occurring between 8pm and midnight.

Table 8: Distribution of child fatalities by time of day, 2006

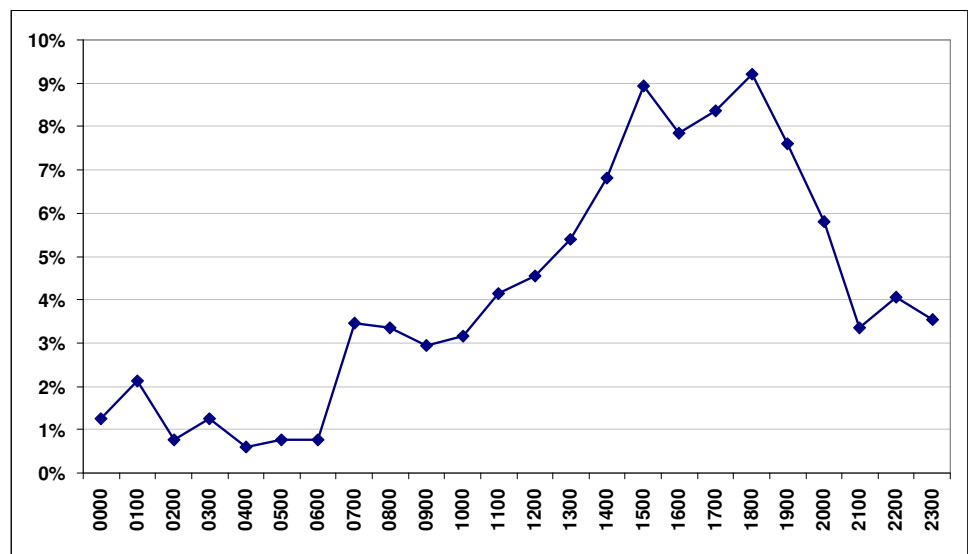
	00:00 - 04:00	04:00 - 08:00	08:00 - 12:00	12:00 - 16:00	16:00 - 20:00	20:00 - 00:00
BE	3%	14%	14%	23%	34%	11%
CZ	0%	11%	11%	36%	25%	17%
DK	6%	0%	41%	24%	18%	12%
EE	14%	0%	14%	57%	0%	14%
EL	4%	4%	9%	26%	34%	23%
ES	8%	5%	15%	13%	33%	26%
FR	5%	3%	12%	22%	44%	14%
IE***	0%	0%	12%	35%	41%	12%
IT**	10%	4%	12%	20%	35%	20%
LU****	0%	0%	0%	67%	0%	33%
HU	6%	4%	15%	46%	23%	6%
MT	0%	0%	0%	0%	0%	0%
NL***	3%	8%	18%	24%	32%	14%
AT	3%	20%	27%	20%	20%	10%
PL*	6%	5%	14%	35%	27%	14%
PT	5%	10%	24%	14%	43%	5%
FI	0%	10%	20%	40%	30%	0%
SE	4%	13%	0%	21%	46%	17%
UK	4%	5%	11%	27%	34%	20%
EU-19	5%	6%	14%	26%	33%	17%

* Data from 2005 (UK = GB 2006 + NI 2005)
** Data from 2004

*** Data from 2003
**** Data from 2002

Source: CARE Database / EC
Date of query: July 2008

Figure 6: Distribution of child fatalities by time of day, EU-19, 2006³



Source: CARE Database / EC
Date of query: July 2008

³ Using last data available, i.e. 2006 for all countries except LU (2002), IE and NL (2003), IT (2004) and PL (2005).

One third of child fatalities are killed between 4 and 8pm.

There is a clear increase of child fatalities in the afternoon and evening hours.





Day of Week

Table 9 shows the distribution of child fatalities by the day of the week, with the totals displayed in Figure 7. On average, Saturday and Sunday have the most fatalities and Monday and Thursday have the fewest.

Table 9: Distribution of child fatalities by day of week, 2006

	Monday	Tuesday	Wednes-day	Thursday	Friday	Saturday	Sunday
BE	14%	14%	14%	9%	14%	9%	26%
CZ	11%	17%	14%	11%	19%	17%	11%
DK	18%	12%	18%	18%	12%	18%	6%
EE	0%	29%	0%	29%	29%	0%	14%
EL	17%	11%	11%	19%	9%	11%	23%
ES	10%	17%	9%	9%	19%	16%	19%
FR	10%	15%	21%	8%	10%	19%	18%
IE***	6%	0%	18%	18%	24%	24%	12%
IT**	10%	14%	10%	13%	6%	21%	25%
LU****	67%	0%	33%	0%	0%	0%	0%
HU	17%	8%	13%	13%	8%	25%	17%
MT	0%	0%	0%	0%	0%	0%	0%
NL***	8%	15%	15%	21%	17%	15%	7%
AT	10%	3%	3%	17%	23%	23%	20%
PL*	11%	15%	16%	9%	13%	17%	19%
PT	24%	5%	10%	10%	19%	14%	19%
FI	0%	20%	40%	20%	10%	0%	10%
SE	13%	21%	4%	8%	25%	13%	17%
UK*	14%	16%	17%	14%	17%	10%	13%
EU-19	12%	14%	14%	12%	14%	16%	18%

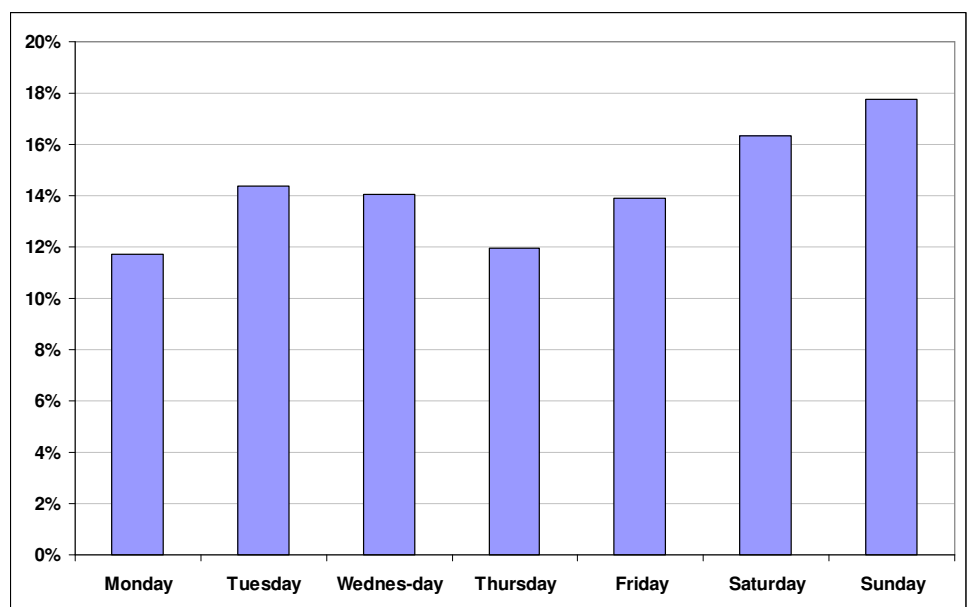
* Data from 2005 (UK = GB 2006 + NI 2005)
 ** Data from 2004

*** Data from 2003
 **** Data from 2002

Source: CARE Database / EC
 Date of query: July 2008

The number of child fatalities per day is highest on Saturdays and Sundays.

Figure 7: Distribution of child fatalities by day of week, EU-19, 2006³



Source: CARE Database / EC
 Date of query: July 2008





Seasonality

Table 10 shows the distribution of child fatalities through the seasons. Most of the child fatalities in EU-19 happen during the summer period from July to September whilst the fewest fatalities are registered from January to March. The monthly totals are displayed in Figure 8.

Table 10: Distribution of child fatalities by month, 2006

	January - March	April - June	July - September	October - December
BE	14%	29%	31%	26%
CZ	17%	28%	31%	25%
DK	6%	35%	41%	18%
EE	14%	14%	71%	0%
EL	6%	32%	36%	26%
ES	17%	28%	31%	24%
FR	10%	24%	33%	32%
IE***	12%	35%	35%	18%
IT**	19%	31%	28%	22%
LU****	0%	0%	67%	33%
HU	13%	33%	33%	21%
MT	0%	0%	0%	0%
NL***	23%	31%	30%	17%
AT	10%	10%	30%	50%
PL*	10%	25%	38%	27%
PT	10%	10%	38%	43%
FI	10%	30%	40%	20%
SE	8%	17%	54%	21%
UK*	15%	24%	37%	25%
EU-19	14%	26%	34%	26%

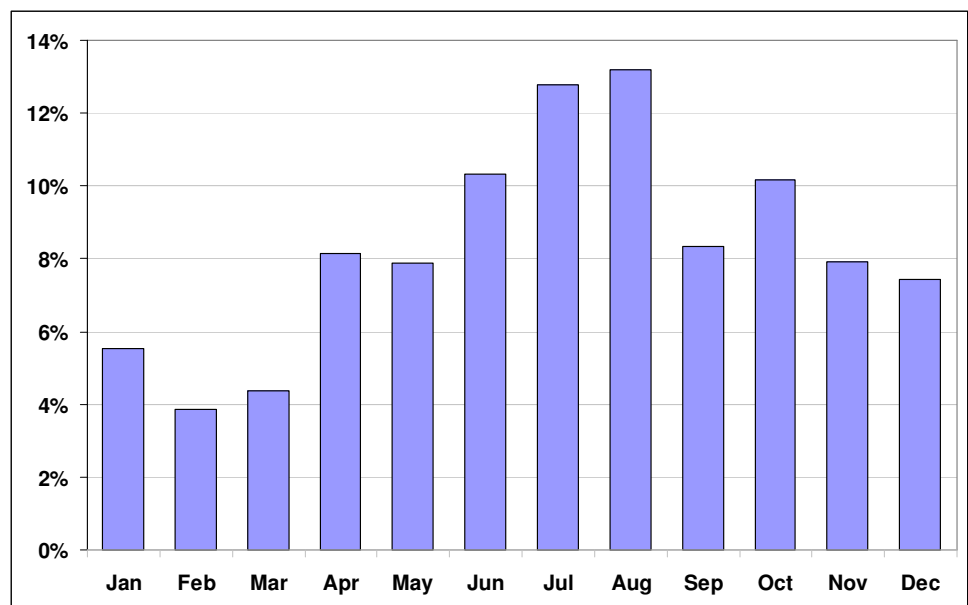
* Data from 2005 (UK = GB 2006 + NI 2005)
 ** Data from 2004

*** Data from 2003
 **** Data from 2002

Source: CARE Database / EC
 Date of query: July 2008

The number of fatalities amongst children is highest in July and August, more than twice the January to March average number.

Figure 8: Distribution of child fatalities by month, EU-19, 2006¹



Source: CARE Database / EC
 Date of query: July 2008





Disclaimer

The information in this document is provided as it is and no guarantee or warranty is given that the information is fit for any particular purpose. Therefore, the reader uses the information at their own risk and liability.

For more information

Further statistical information about fatalities is available from the CARE database at the Directorate-General for Energy and Transport of the European Commission, 28 Rue de Mot, B-1040 Brussels (see ec.europa.eu/transport/roadsafety/road_safety_observatory/care_reports_en.htm).

Traffic Safety Basic Fact Sheets available from the European Commission concern:

- Main Figures
- Children (Aged <16)
- Young People (Aged 16-24)
- The Elderly (Aged >64)
- Pedestrians
- Bicycles
- Motorcycle and Mopeds
- Car-Occupants
- Heavy Goods Vehicles
- Motorways
- Junctions
- Urban Areas

Definition of EU-level and used Country abbreviations

EU-14

BE	Belgium
DK	Denmark
EL	Greece
ES	Spain
FR	France
IE	Ireland
IT	Italy
LU	Luxembourg
NL	Netherlands
AT	Austria
PT	Portugal
FI	Finland
SE	Sweden
UK	United Kingdom

EU-19 = EU-14 +

CZ	Czech Republic
EE	Estonia
HU	Hungary
MT	Malta
PL	Poland

EU-25 = EU-19 +

DE	Germany
CY	Cyprus
LV	Latvia
LT	Lithuania
SI	Slovenia
SK	Slovakia





Detailed data on traffic accidents are published annually by the European Commission in the **Annual Statistical Report**. This includes a glossary of definitions on all variables used.

All these reports and more information on the Integrated Project SafetyNet, co-financed by the European Commission, Directorate-General Energy and Transport are also available at the SafetyNet Website: www.erso.eu/.

Authors

Thomas Leitner, Stefan Hoeglinger	KfV, Austria
Jeremy Broughton, Brian Lawton and Louise Walter	TRL, United Kingdom
George Yannis and Petros Evgenikos	NTUA, Greece
Niels Bos and Martine Reurings	SWOV, The Netherlands
Manuel Andreu, Jean-François Pace and Jaime Sanmartín	INTRAS-UEG, Spain

