



Traffic Safety Basic Facts 2007

Car Occupants

53% of all road fatalities in 2005 in the EU-14 countries are car occupants.

A reduction of 25% in the number of car driver fatalities is observed during the last decade in the EU-14 countries.

In this fact sheet car drivers as well as car passengers are discussed. In case no distinction is made between drivers and passengers, the word occupants will be used.

In 2005¹, 13.771 car occupants were killed in road traffic accidents in the EU-14². This represents 53% of all fatalities in 2005. Of these 13.771 killed car occupants, 9.419 were drivers and 4.349 were passengers (and 3 unknown). Table 1 and Table 2 present the annual data by country that are available from CARE since 1996.

From Table 1 it can be derived that for the EU-14 countries in 2005¹ 4,2% less car driver fatalities are reported than in 2004. There was a reduction of 24,5% during 1996-2005 for the same countries.

For car passengers the reduction is larger: 6,1% with respect to 2004 (4.630 car passenger reported) and 34,8% during 1996-2005.

Table 1: The number of car driver fatalities by country, 1996-2005¹

	1996	1997	1998	1999	2000	2001	2002	2003	2004	2005
BE	637	642	670	644	697	662	592	532	491	471
DK	174	194	193	186	146	168	170	167	135	122
EE	-	-	-	-	-	-	-	-	-	54
EL	520	537	567	536	571	508	505	527	506	518
ES	1.802	1.827	2.047	1.981	2.032	1.971	1.919	2.044	1.688	1.564
FR	3.756	3.673	4.011	3.786	3.711	3.751	3.485	2.635	2.445	2.228
IE	146	131	157	157	173	139	133	110	-	-
IT	2.402	2.483	2.401	2.577	2.427	2.444	2.359	2.048	1.867	-
LU	37	34	36	38	40	36	38	-	-	-
HU	-	-	-	-	-	-	-	-	-	372
MT	-	-	-	-	-	-	-	-	-	2
NL	414	398	401	378	362	351	341	345	-	-
AT	437	486	395	421	406	417	373	371	368	331
PL	-	-	-	-	-	-	-	-	-	1.467
PT	560	580	508	490	407	381	397	393	319	303
FI	158	163	157	179	159	181	183	150	151	162
SE	228	254	258	262	285	261	271	253	201	194
UK	1.198	1.217	1.176	1.138	1.169	1.217	1.199	1.222	1.164	1.166
EU-14 ¹	12.469	12.618	12.978	12.773	12.585	12.488	11.965	10.835	9.829	9.419
Yearly ¹ change	-	1,2%	2,8%	-1,6%	-1,5%	-0,8%	-4,2%	-9,4%	-9,3%	-4,2%

Source: CARE Database / EC
Date of query: November 2007

¹ Using latest data available, i.e. 2005 for all countries except LU (2002), IE and NL (2003) and IT (2004). The data for the New EU countries EE, HU, MT and PL are not included in total trends because they are only available for 2005.

² See table "Definitions of EU-level and used Country abbreviations" on page 11.





Table 2: The number of car passenger fatalities by country, 1996-2005¹

	1996	1997	1998	1999	2000	2001	2002	2003	2004	2005
BE	216	202	266	207	225	237	187	156	132	153
DK	92	65	70	85	89	73	76	69	51	47
EE	-	-	-	-	-	-	-	-	-	30
EL	381	359	344	350	351	295	288	234	269	298
ES	1.199	1.165	1.237	1.212	1.256	1.172	1.185	1.167	1.003	826
FR	1.780	1.684	1.792	1.669	1.579	1.532	1.379	1.054	924	837
IE	72	89	96	79	89	92	69	64	-	-
IT	1.255	1.242	1.115	1.219	1.244	1.254	1.207	1.083	957	-
LU	14	12	7	11	14	15	14	-	-	-
HU	-	-	-	-	-	-	-	-	-	248
MT	-	-	-	-	-	-	-	-	-	1
NL	161	147	149	161	151	126	138	137	-	-
AT	187	180	170	194	143	153	151	153	112	101
PL	-	-	-	-	-	-	-	-	-	1.059
PT	468	420	414	331	325	255	313	237	218	192
FI	69	84	75	72	65	81	84	67	70	69
SE	101	94	69	110	108	112	108	96	87	77
UK	679	642	603	625	601	599	633	619	593	578
EU-14 ¹	6.674	6.384	6.406	6.324	6.240	5.996	5.833	5.150	4.630	4.349
Yearly ¹ change	-	-4,3%	0,3%	-1,3%	-1,3%	-3,9%	-2,7%	-11,7%	-10,1%	-6,1%

Source: CARE Database / EC
Date of query: November 2007

In order to allow for the differing size of these countries, Table 3 presents the car occupant fatality rates for 2005¹. This rate of a country is defined as the number of car occupant fatalities per million inhabitants in that country.

Table 3: Car occupant fatality rates per country, 2005

Fatalities per million population	Drivers	Passengers	Occupants
BE	44,9	14,6	59,5
DK	22,5	8,7	31,2
EE	40,1	22,3	62,4
EL	46,7	26,8	73,5
ES	36,0	19,0	55,1
FR	35,5	13,3	48,9
IE**	27,5	16,0	43,5
IT*	32,1	16,5	48,5
LU***	85,2	31,4	116,5
HU	36,9	24,6	61,5
MT	5,0	2,5	7,4
NL**	21,3	8,4	29,7
AT	40,2	12,3	52,5
PL	38,4	27,7	66,2
PT	28,7	18,2	46,9
FI	30,9	13,2	44,0
SE	21,5	8,5	30,0
UK	19,4	9,6	29,0
EU-18	31,8	16,0	47,9

* Data from 2004
** Data from 2003
*** Data from 2002

Source: CARE Database / EC, EUROSTAT
Date of query: November 2007

A reduction of 35% in the number of car passenger fatalities is observed during the last decade in the EU-14 countries.

The rates of car drivers and passengers killed per million inhabitants are lowest in the United Kingdom, Sweden, the Netherlands and Denmark.





The rate varies between 29 killed car occupants per million in the United Kingdom to 117 in Luxembourg (although the latter rate may give a misleading impression of the level of safety in Luxembourg because of the relatively large volume of foreign traffic in this small country). The fatality rate of car occupants in Malta (7,4) is based on just 3 car occupant fatalities and is hence not very reliable. Table 4 presents the number of car occupant fatalities as a percentage of the total number of traffic fatalities in each country. One quarter of Portuguese killed in road accidents were car drivers. In Luxembourg, Belgium, Austria, France, Finland and Sweden this percentage is much higher.

Table 4: Car occupant fatalities as percentage of the total number of traffic fatalities by country, 2005

	Drivers	Passengers	Occupants
BE	43,3%	14,0%	57,3%
DK	36,9%	14,2%	51,1%
EE	32,0%	17,8%	49,7%
EL	31,2%	18,0%	49,2%
ES	35,2%	18,6%	53,8%
FR	41,9%	15,7%	57,6%
IE**	32,6%	19,0%	51,6%
IT*	33,2%	17,0%	50,2%
LU***	61,3%	22,6%	83,9%
HU	29,1%	19,4%	48,5%
MT	11,8%	5,9%	17,6%
NL**	33,6%	13,3%	46,9%
AT	43,1%	13,2%	56,3%
PL	26,9%	19,5%	46,4%
PT	24,3%	15,4%	39,7%
FI	42,7%	18,2%	60,9%
SE	44,1%	17,5%	61,6%
UK	35,0%	17,3%	52,3%
EU-18	34,3%	17,3%	51,6%

* Data from 2004
** Data from 2003
*** Data from 2002

Source: CARE Database / EC
Date of query: November 2007

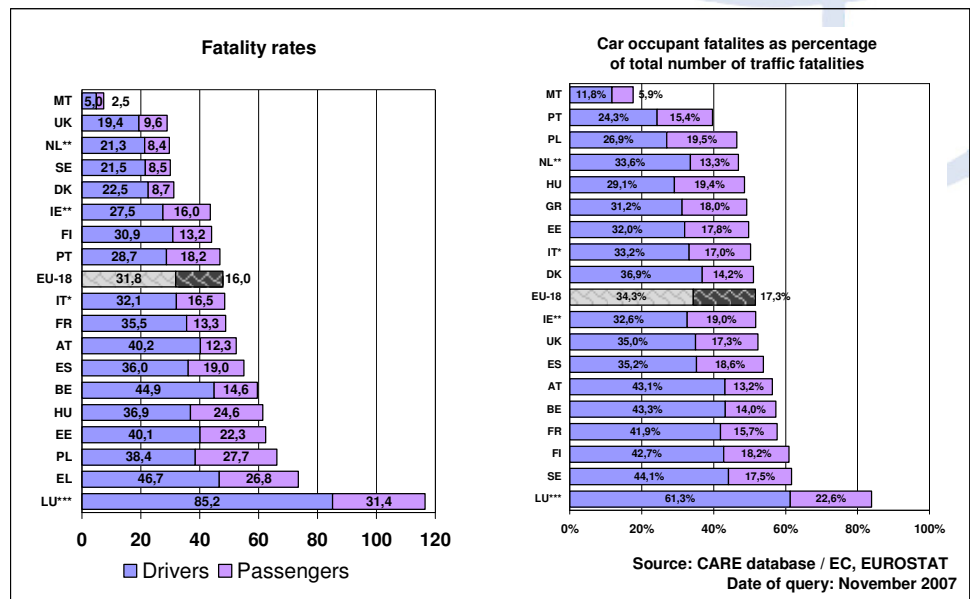
Approximately twice as many car drivers are killed in traffic accidents than car passengers.

The data from Table 3 and Table 4 are illustrated in Figure 1.





Figure 1: Car occupant fatalities per 1.000.000 inhabitants and as a percentage of the total number of traffic fatalities by country, 2005



* Data IT from 2004 ** Data IE, NL from 2003

*** Data LU from 2002

83% of all car driver fatalities are males.

For car passengers fatalities 53% are males.

The share of females in killed drivers is lowest in Estonia, Greece and Poland.

Highest in France, Ireland, Austria and the United Kingdom.

Age and Gender of car occupant fatalities

Table 5 and Table 6 present the percentage of car driver and passenger fatalities per age group and gender.

Table 5: Percentage of car driver fatalities by age and gender, 2005

Age group	15-24		25-39		40-59		60+		Un known	% fem. from known
	fem.	male	fem.	male	fem.	male	fem.	male		
BE	1,9	20,4	5,1	27,2	5,3	23,6	4,9	11,3	0,4	17,3
DK	1,7	19,8	5,0	31,4	4,1	15,7	6,6	15,7	0,0	17,4
EE	1,9	18,5	3,7	24,1	1,9	42,6	0,0	7,4	0,0	7,4
EL	1,2	17,4	4,2	34,9	1,9	23,4	0,8	15,6	0,6	8,2
ES	2,5	16,4	4,9	30,9	4,1	23,6	1,1	15,6	1,0	12,7
FR	4,5	19,7	5,9	22,1	6,5	19,4	4,4	16,8	0,7	21,4
IE**	4,5	23,6	4,5	25,5	3,6	18,2	7,3	8,2	4,5	21,0
IT*	2,4	15,8	5,8	26,8	3,5	19,6	2,1	22,1	2,0	14,0
LU***	2,6	10,5	7,9	44,7	2,6	26,3	2,6	2,6	0,0	15,8
HU	2,4	11,8	6,7	34,7	4,0	29,0	1,3	9,7	0,3	14,6
MT	0,0	50,0	0,0	0,0	0,0	0,0	0,0	50,0	0,0	0,0
NL**	4,1	22,6	4,6	27,5	4,6	19,7	3,5	13,3	0,0	16,8
AT	6,0	17,8	5,4	23,0	6,9	19,9	3,6	17,2	0,0	22,1
PL	1,8	24,2	4,2	32,5	2,7	25,4	0,3	8,0	0,8	9,1
PT	3,4	17,7	6,0	26,3	5,6	24,4	0,8	15,4	0,4	15,8
FI	1,9	18,5	6,8	22,2	6,8	25,9	1,2	16,7	0,0	16,7
SE	3,1	16,0	4,6	19,6	7,2	21,6	4,6	22,7	0,5	19,7
UK	5,9	25,2	5,0	23,5	5,5	15,2	4,8	14,8	0,1	21,2
EU-18	3,2	19,3	5,3	27,3	4,6	21,4	2,6	15,4	0,8	15,9

* Data from 2004

** Data from 2003

*** Data from 2002

Source: CARE Database / EC
Date of query: November 2007

It can be derived from Table 5 that the proportion of all killed drivers who were female varies between 7,4% in Estonia to 22,1% in





Austria. The distribution of driver fatalities over the age groups also varies between countries. Luxembourg has a high proportion of 25-39 year old car drivers and Sweden of drivers of 60 years and older. Low proportions are found in Luxembourg for 60+ car drivers. For all countries and age groups the number of female drivers is lower than the number of male drivers.

Table 6: Percentage of car passenger fatalities by age and gender, 2005

Age group	0-14		15-24		25-39		40-59		60+		Un known	% fem. from known
	fem.	male	fem.	male	fem.	male	fem.	male	fem.	male		
BE	4,6	5,2	9,8	26,1	7,8	13,7	7,8	1,3	19,0	2,0	2,6	50,3
DK	8,5	2,1	2,1	29,8	8,5	12,8	10,6	0,0	23,4	2,1	0,0	53,2
EE	6,7	0,0	23,3	16,7	0,0	23,3	13,3	6,7	3,3	6,7	0,0	46,7
EL	4,4	2,0	10,4	17,4	13,1	12,8	10,1	7,7	13,4	8,1	0,7	51,7
ES	3,2	4,6	9,8	20,0	8,3	13,2	11,5	7,1	13,8	5,0	3,4	48,3
FR	3,6	4,2	13,5	25,0	5,1	11,4	7,0	7,0	17,8	5,1	0,2	47,2
IE**	6,3	3,1	17,2	26,6	4,7	15,6	4,7	3,1	10,9	1,6	6,3	46,7
IT*	3,2	3,0	8,5	22,3	7,9	11,6	7,9	5,2	14,6	5,5	10,1	47,0
LU***	0,0	14,3	14,3	42,9	7,1	14,3	7,1	0,0	0,0	0,0	0,0	28,6
HU	2,8	4,8	13,3	15,7	6,0	19,8	13,3	12,9	8,5	2,8	0,0	44,0
MT	0,0	0,0	0,0	100	0,0	0,0	0,0	0,0	0,0	0,0	0,0	0,0
NL**	5,1	8,0	18,2	22,6	1,5	12,4	4,4	4,4	14,6	5,1	3,6	45,5
AT	3,0	7,9	11,9	23,8	6,9	10,9	12,9	6,9	11,9	4,0	0,0	46,5
PL	2,5	2,9	12,0	21,4	8,0	16,5	10,7	11,3	7,4	3,6	3,7	42,1
PT	0,6	5,9	13,7	26,1	7,1	13,7	7,1	10,7	8,9	3,0	3,1	38,7
FI	5,8	4,3	11,6	17,4	2,9	18,8	7,2	7,2	21,7	2,9	0,0	49,3
SE	2,6	3,9	9,1	16,9	6,5	15,6	5,2	9,1	23,4	5,2	2,6	48,0
UK	2,9	3,8	14,0	32,9	4,0	11,6	6,6	3,6	15,6	4,8	0,2	43,2
EU-18	3,2	3,9	11,6	23,0	7,0	13,5	9,0	7,3	13,4	4,6	3,5	45,8

* Data from 2004
** Data from 2003
*** Data from 2002

Source: CARE Database / EC
Date of query: November 2007

Children account for 7% of all car passenger fatalities.

In The Netherlands and Austria this percentage is much higher.

The share of females among killed passengers does not vary much over the countries.

Among older passengers there are much more females.

The proportion of male or female car passengers does not vary much within the EU, exceptions being caused by small numbers. In the age groups 15-24 and 25-39 the number of male passengers is almost twice the number of females. For older passengers the number of females is almost three times bigger than the number of males.

A relatively high share of fatalities is found for older car passengers (60+) in Sweden and Denmark.

Low proportions are found in Greece, Poland and Portugal for 0-14 year old passengers, in Sweden for 15-24, in France and in the Netherlands for 25-39, in and Ireland for 40-59 and in Portugal for 60+ aged passengers.

Car occupant fatalities by type of road

The CARE data show whether accidents occurred on motorways and, for non-motorway accidents, whether on urban or rural roads. Table 7 shows the number of car occupant fatalities by road and by area type.





Table 7: The number of car occupant fatalities by road type and area type, 2005

	Inside urban area	Outside urban area		Total
		Non motorway	Motorway	
BE	106	398	120	624
DK	28	121	20	169
EE	12	72	0	84
EL	240	510	66	816
ES	148	2.099	142	2.389
FR	577	2.280	208	3.065
IE**	28	140	6	174
IT*	785	1.601	438	2.824
LU***	15	25	12	52
HU	139	444	37	620
MT	3	0	0	3
NL**	78	297	108	483
AT	63	301	68	432
PL	808	1.695	23	2.526
PT	152	290	54	495
FI	30	194	7	231
SE	34	225	14	273
UK	452	1.170	122	1.744
EU-18	3.698	11.861	1.445	17.004
%	21,7%	69,8%	8,5%	

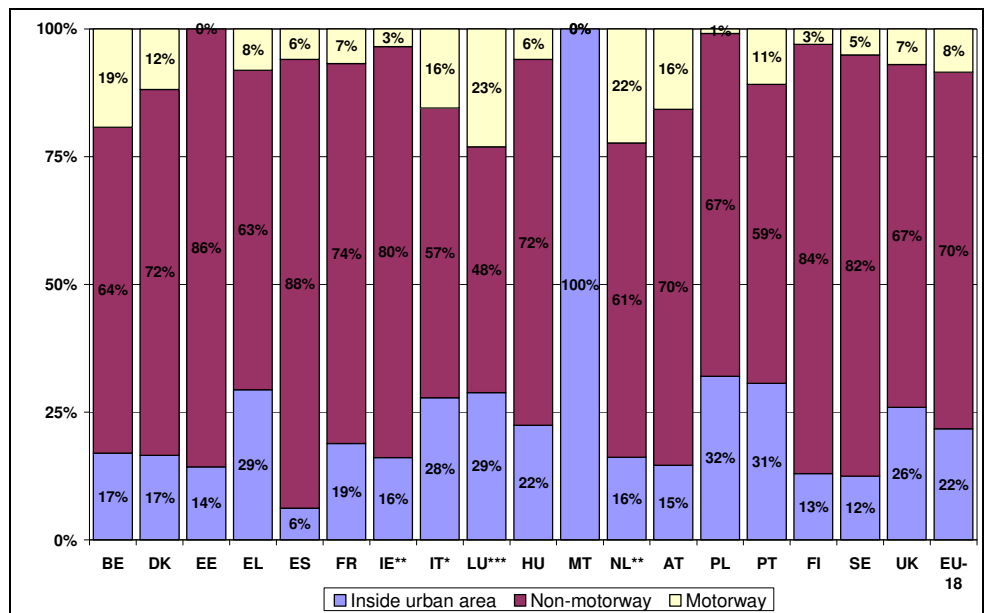
* Data from 2004
** Data from 2003
*** Data from 2002

Source: CARE Database / EC
Date of query: November 2007

The majority of car occupant fatalities occur outside urban areas on non-motorways.

The data from Table 7 are illustrated below.

Figure 2: The percentage of car occupant fatalities by road and area type in 2005





Time of day and day of the week

The CARE database contains the time of day and day of the week for each accident. Table 8 divides the day into six equal segments of four hours to show how car occupant fatalities are distributed through the day. The number of car occupant fatalities occurring between midnight and 4am is relatively high in Luxembourg. In Luxembourg and Ireland the number of fatalities between 8 am and noon is relatively low.

Table 8: The number of car occupant fatalities by time of day, 2005

	am			pm		
	00 – 03:59	04 – 07:59	08 – 11:59	12 – 15:59	16 – 19:59	20 – 23:59
BE	117	124	47	82	118	136
DK	17	27	20	36	39	30
EE	13	5	19	18	18	11
EL	136	177	103	140	163	97
ES	285	377	369	461	484	414
FR	370	480	473	558	685	499
IE**	35	23	13	23	40	35
IT*	532	477	383	399	560	449
LU***	12	8	3	11	10	8
HU	74	91	109	122	134	90
MT	1	0	1	0	1	0
NL**	64	73	71	95	100	80
AT	48	72	85	66	90	71
PL	321	384	411	483	493	434
PT	83	82	67	73	111	79
FI	32	20	35	53	59	32
SE	26	33	39	78	58	39
UK	266	181	212	324	366	395
EU-18	2.432	2.634	2.460	3.022	3.529	2.899
%	14,3%	15,5%	14,5%	17,8%	20,8%	17,0%

* Data from 2004

** Data from 2003

*** Data from 2002

Source: CARE Database / EC

Date of query: November 2007

Table 9 shows the number of car occupant fatalities by day of the week.

The number of car occupant fatalities is highest between 16 and 20 hours.

The proportion of car occupant fatalities occurring at the weekend is highest in Estonia, Ireland and Italy.





Table 9: The number of car occupant fatalities by day of week, 2005

	Monday	Tuesday	Wednesday	Thursday	Friday	Saturday	Sunday
BE	79	56	68	79	83	145	114
DK	19	14	13	34	35	32	22
EE	8	4	10	13	12	17	20
EL	100	92	72	106	119	172	155
ES	328	246	290	275	335	458	458
FR	357	348	366	367	484	575	568
IE**	27	16	15	19	22	31	44
IT*	327	301	270	344	393	564	625
LU***	7	3	8	6	9	15	4
HU	101	77	75	63	82	140	82
MT	0	1	0	0	0	2	0
NL**	68	50	50	64	71	97	83
AT	51	66	63	62	72	54	64
PL	299	279	284	312	376	434	542
PT	66	57	59	55	63	108	87
FI	38	21	26	28	47	47	24
SE	34	26	36	49	56	47	25
UK	239	187	240	213	238	345	282
EU-18	2.148	1.844	1.945	2.089	2.496	3.284	3.199
%	12,6%	10,8%	11,4%	12,3%	14,7%	19,3%	18,8%

* Data from 2004
** Data from 2003
*** Data from 2002

Source: CARE Database / EC
Date of query: November 2007

The proportion of car occupant fatalities occurring at the weekend is highest in Estonia, Ireland and Italy.

All countries except Austria have more fatalities per day at the weekend than on weekdays, and the weekend peak is more pronounced in Estonia, Italy and Ireland.

Table 10 shows the proportion of car occupant fatalities by time of day and day of the week for all 18 countries together in 2005. If the fatalities would be distributed equally over time of the day and day of the week, you may expect $100/84 = 1,19\%$ in each cell. Cells with 30% higher or lower values have been coloured. There are relatively many fatalities per hour during nights at the weekend.

Table 10: Percentage of car occupant fatalities by day and hour, EU-18, 2005¹

	Mon	Tue	Wed	Thu	Fri	Sat	Sun	EU-18
0 - 1:59	0,9%	0,5%	0,7%	0,7%	1,0%	1,9%	1,6%	7,2%
2 - 3:39	0,7%	0,4%	0,5%	0,5%	0,8%	2,0%	2,1%	7,1%
4 - 5:59	0,8%	0,5%	0,5%	0,5%	0,8%	1,8%	2,2%	7,1%
6 - 7:59	1,1%	0,8%	0,9%	1,0%	1,2%	1,5%	1,9%	8,4%
8 - 9:59	1,0%	0,9%	1,0%	1,1%	1,0%	1,1%	1,0%	7,2%
10-11:59	1,0%	1,0%	0,9%	1,0%	1,0%	1,3%	1,0%	7,3%
12-13:59	1,2%	0,8%	1,3%	1,1%	1,1%	1,3%	1,3%	8,1%
14-15:59	1,3%	1,1%	1,2%	1,4%	1,5%	1,6%	1,5%	9,6%
16-17:59	1,5%	1,4%	1,4%	1,4%	1,6%	1,8%	1,7%	10,9%
18-19:59	1,2%	1,2%	1,2%	1,3%	1,5%	1,8%	1,8%	9,9%
20-21:59	1,1%	1,1%	1,0%	1,2%	1,4%	1,6%	1,4%	8,9%
22-23:59	0,9%	0,8%	1,0%	1,0%	1,6%	1,6%	1,2%	8,1%
EU-18	12,6%	10,8%	11,4%	12,3%	14,7%	19,3%	18,8%	100%

>1,55 %
<0,92 %

Source: CARE Database / EC
Date of query: November 2007

The number of fatalities per hour is highest during nights at the weekend.





Month of the year

Table 11 shows the number of car occupant fatalities for each month in 2005.

Table 11: The number of car occupant fatalities by month, 2005

	Jan	Feb	Mar	Apr	May	Jun	Jul	Aug	Sep	Oct	Nov	Dec	Total
BE	56	48	44	52	46	68	58	45	48	51	53	55	624
DK	21	10	6	16	11	9	24	18	11	11	15	17	169
EE	11	2	7	1	6	10	11	2	12	9	9	4	84
EL	63	55	50	57	72	71	81	87	52	83	70	75	816
ES	191	167	199	176	208	205	236	223	198	204	162	221	2.389
FR	249	227	234	230	224	264	313	264	253	250	247	310	3.065
IE**	9	10	17	10	19	22	20	12	9	17	16	13	174
IT*	247	203	180	227	250	214	277	257	199	228	276	266	2.824
LU***	1	5	1	3	3	5	6	6	6	6	5	5	52
HU	40	44	41	53	60	55	68	48	46	54	58	53	620
MT	0	0	0	1	0	0	0	1	0	0	0	1	3
NL**	56	39	37	39	31	33	47	45	25	45	50	36	483
AT	40	27	33	30	32	25	45	44	35	33	57	31	432
PL	213	155	140	169	207	245	273	266	214	246	204	194	2.526
PT	32	62	46	31	34	30	43	33	56	47	31	51	495
FI	33	10	17	12	22	21	30	24	19	17	13	13	231
SE	20	24	31	18	14	25	25	19	24	22	17	34	273
UK	170	137	142	100	129	117	133	134	138	162	176	206	1.744
Drivers	1.015	827	829	812	903	947	1.061	916	927	983	1.007	1.086	11.314
Pass.	436	397	396	413	463	471	629	611	418	502	451	499	5.687
EU-18	1.452	1.224	1.225	1.225	1.369	1.418	1.690	1.528	1.345	1.485	1.459	1.585	17.004
%	8,5	7,2	7,2	7,2	8,0	8,3	9,9	9,0	7,9	8,7	8,6	9,3	8,5

* Data from 2004
** Data from 2003
*** Data from 2002

Source: CARE Database / EC
Date of query: November 2007

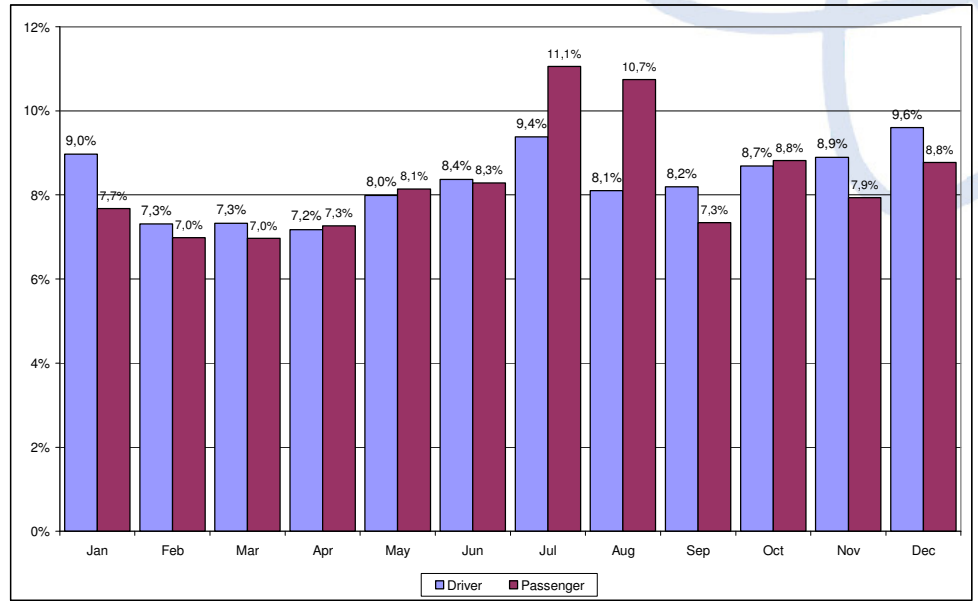
For car occupants the number of fatalities is a little lower in March and April. The number in February seems small also, but this month counts only 28 days. For drivers there is no obvious seasonal pattern. For passengers however the number of passenger fatalities is relatively large during the holiday months – July and August.

The number of car occupant fatalities is lowest in spring and highest in July and December.

The proportion of car passenger fatalities is highest during the summer holidays.



Figure 3: Distribution of car driver and passenger fatalities by month, EU-18, 2005¹



Main Figures

Children

Young People

The Elderly

Pedestrians

Bicycles

Motorcycles & Mopeds

Car Occupants

Heavy Goods Vehicles

Motorways

Junctions

Urban Areas





Disclaimer

The information in this document is provided as it is and no guarantee or warranty is given that the information is fit for any particular purpose. Therefore, the reader uses the information at their own risk and liability.

For more information

Further statistical information about fatalities is available from the CARE database at the Directorate-General for Energy and Transport of the European Commission, 28 Rue de Mot, B-1040 Brussels (see ec.europa.eu/transport/roadsafety/road_safety_observatory/care_reports_en.htm).

Traffic Safety Basic Fact Sheets available from the European Commission concern:

- Main Figures
- Children (Aged <16)
- Young People (Aged 16-24)
- The Elderly (Aged >64)
- Pedestrians
- Bicycles
- Motorcycle and Mopeds
- Car-Occupants
- Heavy Goods Vehicles
- Motorways
- Junctions
- Urban Areas

Definition of EU level and used Country abbreviations

EU 14

BE	Belgium
DK	Denmark
EL	Greece
ES	Spain
FR	France
IE	Ireland
IT	Italy
LU	Luxembourg
NL	Netherlands
AT	Austria
PT	Portugal
FI	Finland
SE	Sweden
UK	United Kingdom

EU 18 = EU 14 +

EE	Estonia
HU	Hungary
MT	Malta
PL	Poland

EU 27 = EU 18 +

BG	Bulgaria
CZ	Czech Republic
DE	Germany
CY	Cyprus
LV	Latvia
LT	Lithuania
RO	Romania
SI	Slovenia
SK	Slovakia

Detailed data on traffic accidents are published annually by the European Commission in the **Annual Statistical Report**. This includes a glossary of definitions on all variables used.





All these reports and more information on the Integrated Project SafetyNet, co-financed by the European Commission, Directorate-General Energy and Transport are also available at the SafetyNet website: www.erso.eu.

Authors

Niels Bos and Martine Reurings	SWOV, The Netherlands
Stefan Hoeglinger, Thomas Leitner	KfV, Austria
George Yannis and Petros Evgenikos	NTUA, Greece
Jeremy Broughton, Brian Lawton and Louise Walter	TRL, United Kingdom
Manuel Andreu, Jean-François Pace and Jaime Sanmartín	INTRAS-UVEG, Spain

Main Figures

Children

Young People

The Elderly

Pedestrians

Bicycles

Motorcycles & Mopeds

Car Occupants

Heavy Goods Vehicles

Motorways

Junctions

Urban Areas

